

Installation Instructions

IMPORTANT!

Keep the boards in room temperature for at least 48 hours in unopened package before you start the installation. The room temperature must be at least 18° C (60°F) before and during the installation. For floor surfaces exceeding 100 m² (1000 square feet) and/or lengths exceeding 10m (35 linear feet), and when going from room to room, you will need to install expansion joints.

1. PREPERATIONS

Alloc Universal is to be installed as a floating floor, which means: The boards are not to be glued or tacked to the underlay. Leave an expansion gap around the perimeter of the room app. 6-10 mm (1/4 inch). Remove old mouldings. Measure the room accurately, at right angles to the direction of the boards. The boards in the final row should be at least 5cm (2 inches) wide. If necessary, the boards in the first row can be cut to smaller size on their width. Tools needed to install Alloc Universal are jig-saw or fine toothed hand saw and spacer blocks . You also need an underlay paper or foam, with thickness of max 2 mm (3/32 inches). All types of concrete sub floors require 0,20 mm (6-8 mil) plastic moisture barrier. The concrete sub-floor must be completely dry.

2. THE SUPPORTING FLOOR

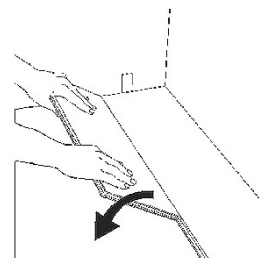
Alloc Universal can be installed on most existing floors, e.g. wooden floors, PVC and concrete floors. All carpeting should be removed. Make sure that the surface is level, dry and even, ± 2mm per 2m (3/16 inch per 10 feet). Alloc Universal is normally applied at right angles to the direction of the old boards. The supporting floor needs to be thoroughly dried. Wooden and woodbased materials, max 50% relative humidity. Concrete and light concrete floor, max 2,0 cm% (85%relative humidity). Plaster and plaster based floor, max 0,5 CM%. All types of concrete floors, require a plastic moisture barrier. This is also needed even if the moisture barrier is integrated with the underlay. Use a plastic moisture barrier at least 0,2 mm (6-8 mil). The diffusion foil must be taped or applied with a minimum of 20 cm (8 inches) joint overlap, turned up against the walls, and clean-cut once the floor is installed. Before installing Alloc Universal a layer of foam, of maximum thickness 1-2 mm (approx. 3/32 inches) should be applied.

3. FLOOR HEATING

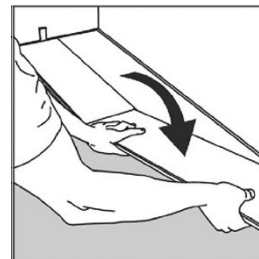
Prior to installation of Alloc, PE-foil with a minimum thickness of 0,20 mm (8 mil) is installed, to function as a moisture (vapour) barrier. All heating elements must be turned off during installation, and the temperature of the sub-floor must be between 15 and 25° C (59 and 77° F). The maximum allowed surface temperature of Alloc is 28° C (80° F). The installed flooring area of Alloc must not contain heated and non-heated areas, unless separated by expansion profiles. The effect of the heating elements must not exceed:

- Heating element: 60W per m² (PE-foil shall be installed directly under the Alloc Flooring)
- Heating mats: 60W per m² (PE-foil shall be installed directly under the heating mats).
- Heating system with pipes of water: the in- and outgoing water temperature must be regulated not to exceed 60W per m². (PE-foil shall be installed directly under the Alloc Flooring)

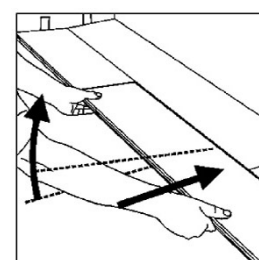
3
 Place the board at an angle against the board in the previous row, press down and forward at the same time.



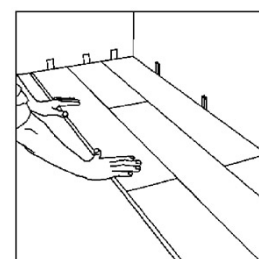
4
 Place the short side of the board at an angle and lay into place. Ensure that the long side lands on top of the locking groove of the previous board.



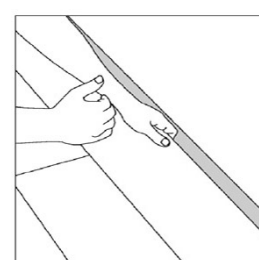
5
 Lift the board (and even the former board in the same row) approx. 30 mm and press the long side against the above row. Put them down when the boards are tight against each other.



6
 When three rows are installed you can regulate the floor against the wall. Place the floor with spacers 1/4" from to the wall. If the wall is uneven, the board must be adapted to its contours. Draw the contour, don't forget to leave a distance of 1/4" .

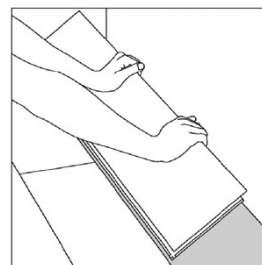


7
 Remove the first row by lifting the boards a few inches and tap along the joint. Cut the board as required. The floor can easily be removed and re-installed. Just lift the board and tap along the joint.



8

Re-lay the adjusted boards from the left to the right. Press the first board against the edge of the second row, groove side first.



9

The released board can be pulled out. Never bend connected boards backwards, while this will damage the boards. Measure and cut the board in the last row. Leave 1/4" to the wall.

